

# Quick Start Guide ARD 3100 and ARD 3400



## About This Quick Start Guide

This guide is for helping new customers get their Sencore ARD 3100 and ARD 3400 setup and running as quickly and easily as possible.

The ARD 3x00 series of ATSC 3.0 receiver decoders can receive an ATSC 3.0 signal and decode up to 4x services. The ARD 3100 can decode up to 1x UHD/HD/SD service and output to SDI which can be synchronized to a genlock signal. The ARD 3400 can decode up to 1xUHD or up to 4x HD/SD services and output to SDI. Multiple outputs can be synchronized to a genlock source.

## Download the Full User's Manual

The current versions of the full user's manuals can be obtained from the Download tab of individual product pages on our website: [www.sencore.com](http://www.sencore.com) or by emailing Sencore ProCare support at [procare@sencore.com](mailto:procare@sencore.com).

## Unpack the Equipment

Check that there are no signs of damage to equipment due to transport. If the equipment appears to be damaged, please contact Sencore ProCare for support.

In addition to the Sencore ARD 3100 and ARD 3400 hardware itself, the box should include power cables or AC adapters and various rackmount hardware.

## Equipment Installation and Power Up

The ARD 3100 and ARD 3400 server hardware is designed for rack installation and should be securely connected to the rack using the included rack rails and screws suitable for the rack type. Note that there should be sufficient room for air to freely flow around the unit, ensuring proper cooling. The chassis requires front-to-back airflow.

The ARD 3100 and ARD 3400 server hardware is specified to operate in the range of 100–240VAC, 50-60Hz

There are two chassis options that may be used for the ARD 3100 and ARD 3400. The port details for both chassis are shown in Figures 1 and 2.

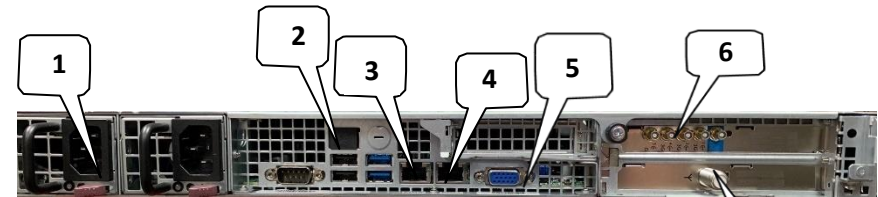


Figure 1: ARD 3100 and ARD 3400 Rear Port Connectors

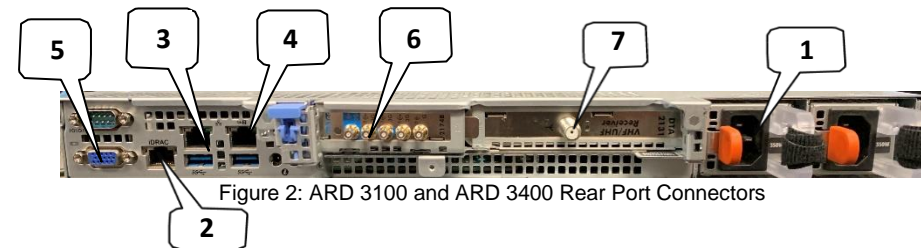


Figure 2: ARD 3100 and ARD 3400 Rear Port Connectors

1. Dual Power Connectors: Provides AC power connection for powering the system
2. IPMI Port: Can be used for remote server management, but not normally used in the ARD 3100 & 3400 operation
3. eth0 Port: Network port for management.
4. eth1 Port: Network port for management.
5. VGA Monitor Output
6. SDI output module with genlock
7. ATSC 3.0 RF receiver module

NOTE: For details on connecting and configuring SDI outputs see the full user's manual.

## Establish a Web Connection to the ARD 3100 & 3400

To access the ARD 3x00 web user interface, it is necessary to establish an Ethernet connection to the device. There are two alternative ways to connect to or set the device's management IP address: using the pre-set management IP address or connecting a monitor and keyboard to the server.

### Using the Pre-Set Management IP Address

The Sencore ARD 3x00 is shipped with the following factory settings for the network ports:

eth0 Default IP Address:	<b>10.0.20.101</b>
eth0 Default Subnet Mask:	<b>255.255.0.0</b>
eth1 Default IP Address:	<b>DHCP</b>

To connect to the web UI, the PC used for setup should have corresponding network settings. Connect a PC directly to eth0 using an Ethernet cable.

For Windows, the network parameters are set in the **Control Panel — Network and Internet — Network and Sharing Center — Network Connection — Properties — Internet Protocol Version 4 Properties** view, as shown in figure 2. Select the user defined address and set the PC's IP address to 10.0.20.60 and the subnet mask to 255.255.0.0.

When the IP address of the PC has been set in the same subnet as the ARD 3x00 factory setting, a web browser can be used to access the web user interface at 10.0.20.101.

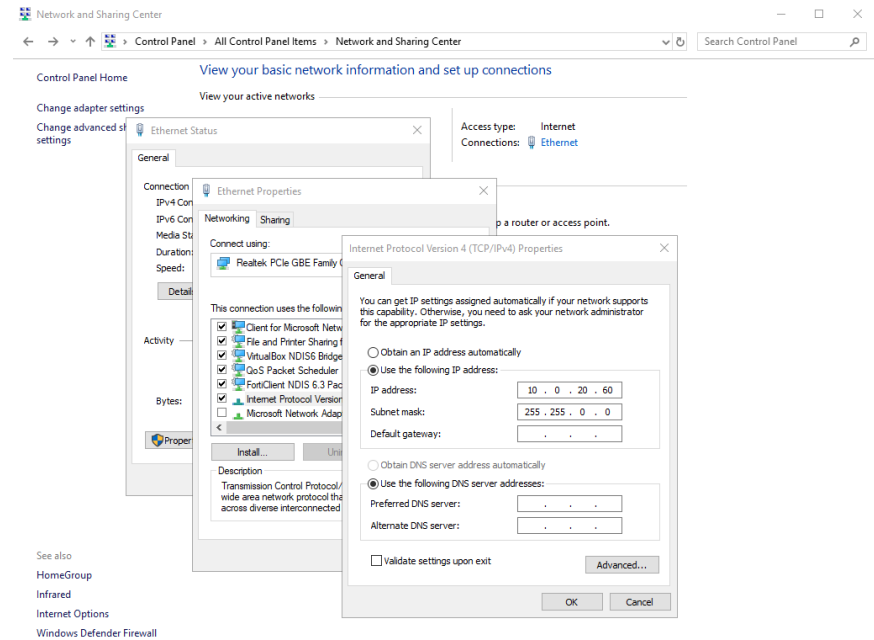


Figure 3: Setting the IP address manually in Windows

### Connecting Monitor and Keyboard to the ARD 3x00

It is also possible to configure the network settings of the ARD 3x00 using a monitor and keyboard connected directly to the server. Once the ARD 3x00 server boots, a console screen will be shown which will allow viewing and configuring the IP settings of the system

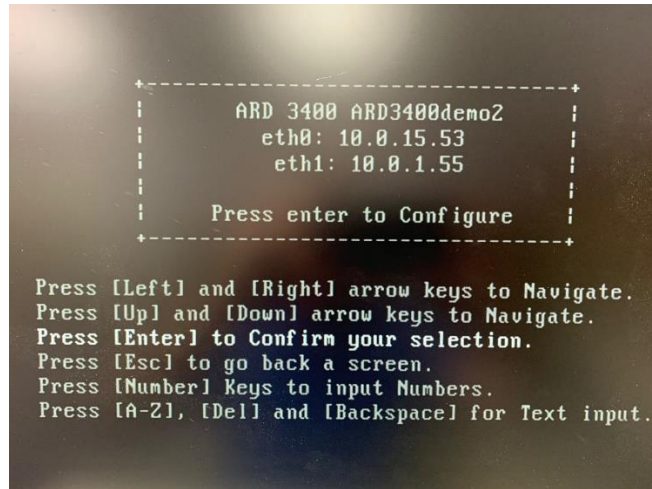


Figure 4: ARD 3100 and ARD 3400 Console Screen

The eth0 and eth1 IP addresses are shown on the initial main menu. If the IP addresses are not shown or they are to be changed, press the ENTER key on the keyboard to advance to the next menu.

The next screen allows configuration of both global network settings and the configuration of any of the eth ports. Select Configure Networks to change the host name, default gateway or DNS settings. Select eth0 Adapter Status to change the IP mode (static/DHCP), IP address, netmask, or gateway for eth0. Select the other Adapter Status selections to configure the other eth ports. Configure the networks settings to be appropriate for your network and consult the full user manual if more instructions are needed.

Once the network ports are configured, press ESC to return to the main menu. Verify that the correct IP address is displayed for eth0 or eth1. A reboot is not necessary for the settings to be applied

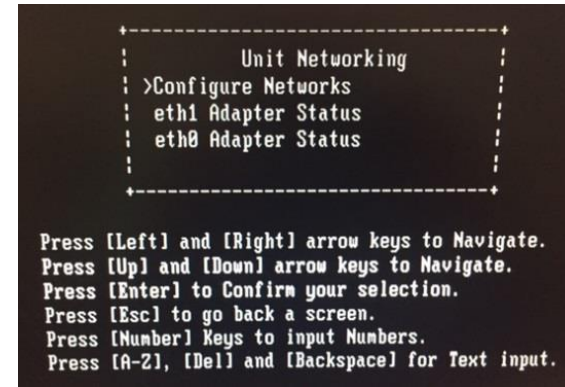


Figure 5: ARD 3100 & 3400 Console Configuration Screen

## Connect to the Web User Interface of the ARD 3x00

Launch a web browser application on the management PC. The following web browsers are supported:

- Microsoft Edge
- Microsoft Internet Explorer 9 or higher
- Mozilla Firefox
- Google Chrome

Type the management IP address of the ARD 3x00 in the browser URL field and press ENTER. The ARD 3x00 login screen will be displayed. The default user is **admin** and the default password is **mpeg101**. Click Login to continue.

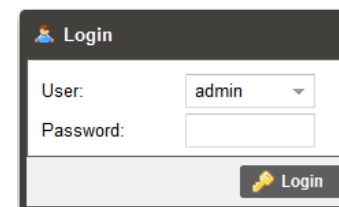


Figure 6: ARD 3100 and ARD 3400 Web UI Login Screen

# Quick Start Guide ARD 3100 and ARD 3400



## Define Decoder Configuration

Once logged in, the main screen of the ARD 3x00 is displayed. Click on the Decoder tab to begin configuring the ARD 3x00 for operation.

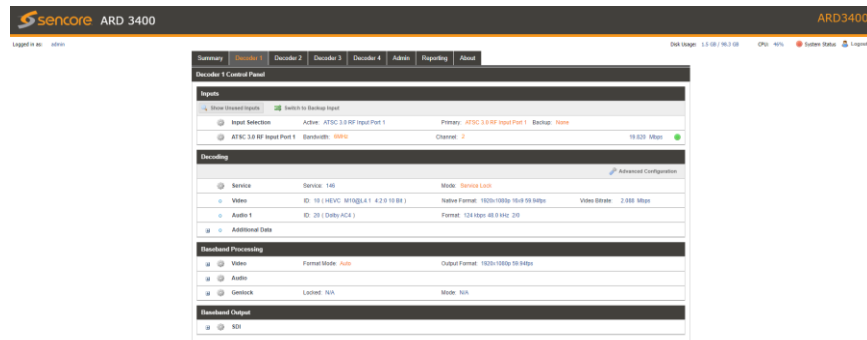


Figure 7: ARD 3100 and ARD 3400 Main Screen

## Support

Reference the full User Manual for more information about operation or troubleshooting the unit.

Contact Sencore ProCare for support, if required.

Email: [procare@sencore.com](mailto:procare@sencore.com)

Phone: +1-605-978-4600