

MULTIPLEXER

DMUX-510

NEW
CORE

NEW
WEB
INTERFACE

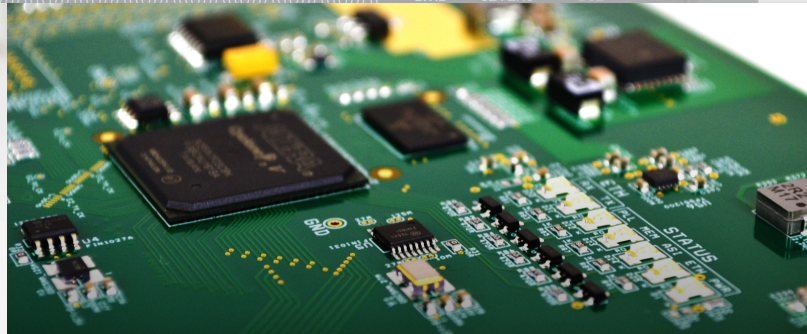
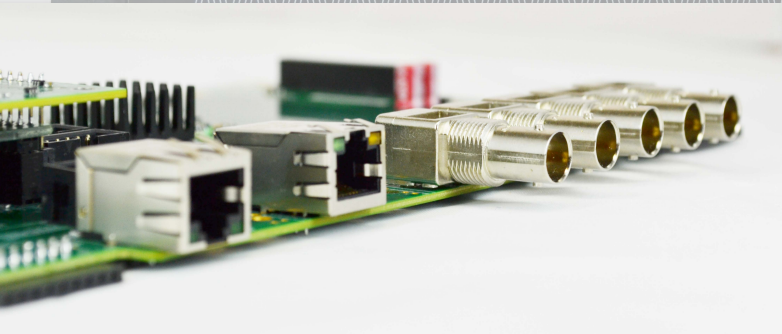
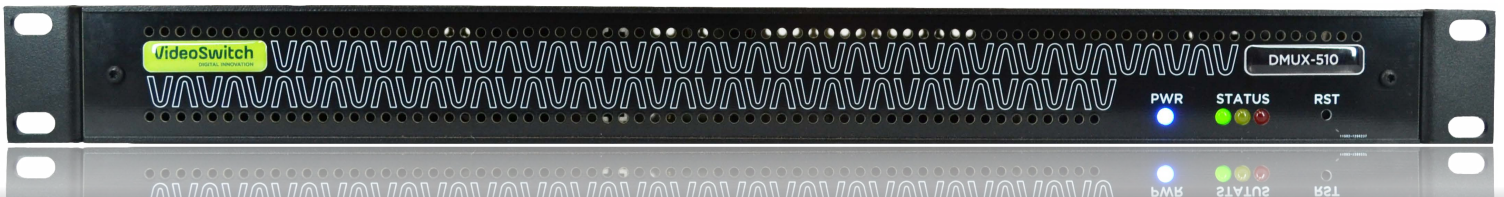
ISDB-T INTERNATIONAL STANDARD

► Ideal for repeaters

- Cost-effective, high performance
- Integrable with any transmitter that complies with the ISDB-T International Standard
- EWBS (Emergency Warning Broadcast System)

► Simple and Robust

- ASI and IP inputs, with automatic redundancy
- Duplicate BTS output



MAIN FEATURES

- ISDB-T Multiplexer compatible with MPEG and ISDB-T International standards
- BTS generation according to ARIB STD-B31 and ABNT NBR 15601
- Independent Ethernet Video and Control interfaces
- Manual and automatic PMT edition, allowing Closed Caption insertion, OAD, Ginga, etc.
- Compatible with ARIB TR-B14 operation guide, which guarantees its correct working with every receiver
- Service bit rate limiter
- Automatic redundancy for inputs and services
- Manual or Automatic activation of EWBS and Superimpose via EWDT processing
- Synchronization for Single Frequency Networks
- Software licensing
- Supports EPG, Closed Caption and Ginga servers, including SSA (Auxiliary Services Server) from VideoSwitch
- Non PC-based, embedded FPGA/Microprocessor^{NEW}

Multiplexer Equipment for Digital Terrestrial Television broadcasting stations compatible with MPEG and ISDB-T International multiplexing standards. Prepared to operate both in MFN and SFN networks.

It is capable of generating and retransmitting PSI and SI tables. It has 10 MHz and 1 PPS inputs and outputs for SFN networks synchronization and it can optionally house a GPS receiver in the same case

It has 1 Gigabit Ethernet (RJ-45) IP input/output interface and up to 4 ASI (BNC) inputs. All of them can be set as active or redundant.

It has 1 ASI / BTS output (2 BNC) and 1 ASI/BTS Monitoring output (BNC). It is also capable of generating the BTS over IP Unicast as well as Multicast.

This multiplexer also has the EWDT (Emergency Warning Distribution Table) processing function, which allows activating the EWBS emergency alert together with the Superimpose automatically when it receives this table on any of its inputs.

Configuration and monitoring via Web and SNMP, with access control system.



DMUX-510

ISDB-T MULTIPLEXER

FUNCTIONS

- Multiplexing of up to 32 services
- PIDs, Transports and Services remapping
- Manual and automatic PMT edition
- BTS generation in compliance with ARIB STD-B31 and ABNT NBR 15601
- Generation and retransmission of PSI and SI tables according to ABNT NBR 15603
- Correction and re-stamping of PCRs
- Automatic redundancy of inputs and services, with internal switch-over (L)
- Automatic EIT editing for Service ID correction (L)
- Synchronization for SFN networks (L)
- Bitrate Limiter for Entry and Service (L)
- EWBS and Superimpose signaling with manual or automatic activation via EWDT (Emergency Warning Distribution Table) (L)
- Optional: Integrated GPS receiver for internal generation of 10 MHz and 1 PPS references [G]

DATA INTERFACES

- 1 x GbE UDP/IP Input / Output (1 x RJ45)
- Supports 188 and 204 bytes TS packets
- Supports up to 248 SPTS/MPTS Inputs over IP Unicast/Multicast + 4 SPTS/MPTS Inputs over ASI (4 x BNC)
- 1 x Duplicate ASI-BTS Output (Main + Backup) (2 x BNC)
- 1 x ASI BTS (Monitoring) (1 x BNC)

REFERENCES

- Input and Output (Active Loop) of 10MHz and 1PPS
- High precision Internal Oscillator with Hold Over
- Optional: Integrated GPS receiver [G]

CONTROL

- Software and Firmware management and update through a user-friendly and intuitive Web Interface **NEW**
- User control for access restriction
- Indication of the global status of the device with alarms and error log.
- RS-232 port for service and maintenance
- Monitoring and control via SNMP protocol (L)

GENERAL

- 1 UR 19 "x 160mm (depth) - Fixed internal Power Supply
- Maximum Power Consumption 20W (depending on the addition of optional features)
- Power supply: 85-264VAC (47Hz-63Hz)

(L): Software Licensing